

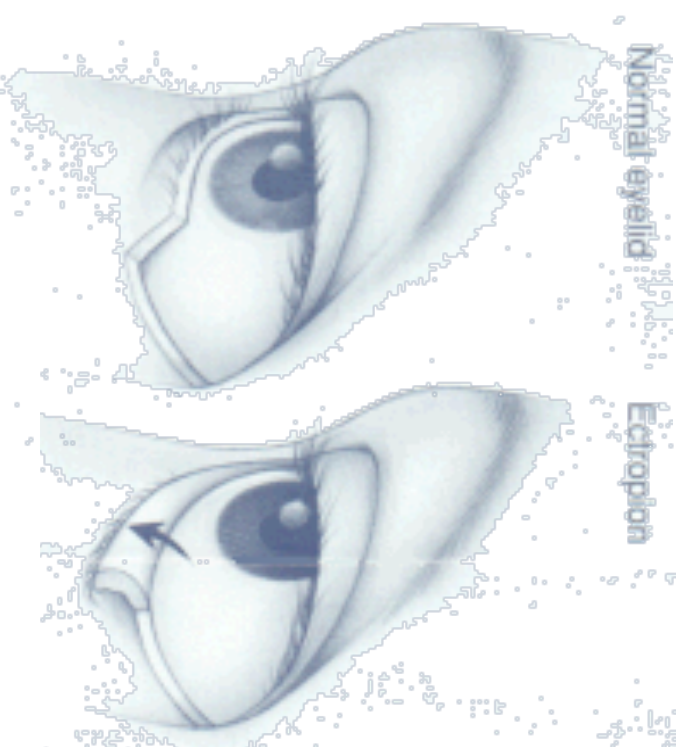


This information sheet is designed to provide more information for patients awaiting oculoplastic surgery by Mr David Cheung.

Further information is available from Mr Cheung's patient website:
www.mrdavidcheung.com

What is ectropion?

Ectropion refers to when the lower eyelid no longer lies snugly against the eyeball. and starts to turn outwards away from the eyeball.



What causes ectropion?

As we grow older the tendons of the lower eyelid, which normally keep the eyelid taut against the eyeball, can start to loosen resulting in laxity of the eyelid itself.

Furthermore, the cheek starts to descend due to the loosening of its deep attachments to the underlying cheek bone. This can lead to pulling on the lower lid, resulting in it being pulled downwards and outwards.

Scarring of the skin around the eyelid can cause the lids to turn outwards. There are many causes of scarring, for example, burns, chemical splashes, certain skin diseases.

Damage to the facial nerve can result in weakness of the the muscles of the lower eyelid, leading to ectropion.

What are the signs and symptoms of ectropion?

- Watery of the eye
- Dryness of the eye.
- Redness.
- Sensitivity to wind and light.
- Outward turning lower eyelid.

How is ectropion treated?

The best option for treating ectropion is by surgery to tighten the tissues of the lower eyelid. This will result in restoring the lower eyelid to its normal position, so that it fits snugly against the eyeball.

Often this involves surgery to tighten the loosened tendons only. However for more severe types of ectropion, more extensive surgery e.g. skin grafting or using skin flaps, may be required to reduce the pull on the eyelid

Most operations can be done quite comfortably and quickly using a local anaesthetic injection as a day case procedure.

Do you have any questions?

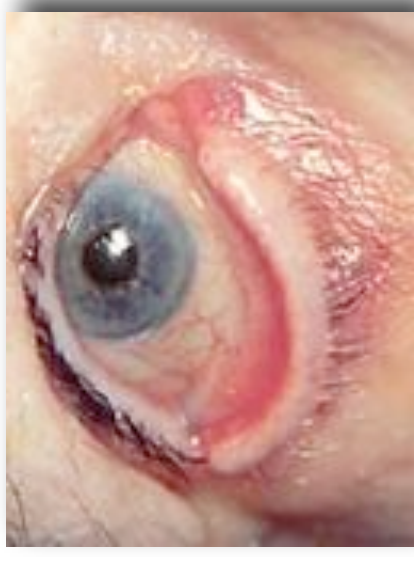
Write them down here and bring this with you if you have to come for any treatment of your ectropion

Lid, Lacrimal and Orbital Service
Ophthalmology Department
Sandwell General Hospital, Birmingham

Lid, Lacrimal and Orbital Service
Ophthalmology Department
Russells Hall Hospital, Dudley, Birmingham

Private Practice:
West Midlands Hospital, Halesowen
The Priory Hospital, Birmingham
The Edgbaston Hospital, Birmingham

www.mrdavidcheung.com



Ectropion:

Turning out of the eyelids